

Fact Sheet

# Services for waste to energy plants and biomass cogeneration plants

STEAG Technischer Service GmbH is an expert in the servicing, maintenance and inspection of waste to energy plants and biomass cogeneration plants.

Waste to energy plants and biomass cogeneration plants are currently facing a difficult market environment. At the same time, they are important pillars of energy supply in the form of electricity and heat. That is why these systems have to work economically and at the same time be reliably available. Regular servicing, maintenance and inspection of the power plants therefore ensures reliable operation. Our experienced service technicians ensure short inspection times and total professionalism. With its many years of experience in the operation and maintenance of power plants fueled with waste and biomass, STEAG Technischer Service GmbH is your expert partner for the maintenance, servicing and modernization of your plant, especially for grates, deslagging, pressure components, flue gas ducts and cladding.

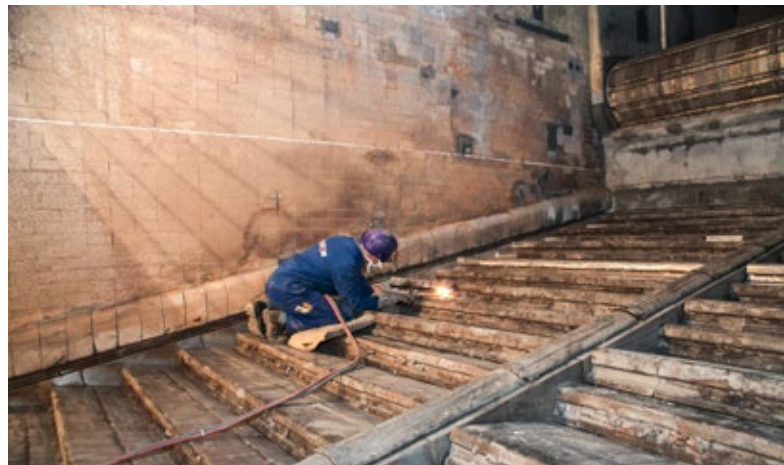
One of our special fields is manual and machine cladding on site. There are only a handful of companies in Germany which are capable of performing that process, with employees who are recognized specialists in their field. As a premium cooperation and sales partner of Uhlig, based in Langelsheim, we also offer a complete package for the workshop production of cladded pipes and membrane walls.



### Our range of services in detail:

- Repair of gratings
- Deslagging
- Work on pressure components including design and delivery of the components
- Repair of flue gas ducts
- On-site and workshop cladding
- Delivery and installation of cladded components
- Maintenance, servicing and repair service
- Valve inspection

We also look after all system-relevant components such as gear units, fans, compressors, pumps, valves of all types, conveyor systems as well as electric motors and the entire field of measurement and control technology (e.g. testing and calibration of transmitters, pressure and temperature sensors).



### Your Contacts:

#### STEAG Technischer Service GmbH

Reimund Zysk  
Gratings, slag extractors, flue gas ducts  
Forellstraße 100  
D-44629 Herne  
Phone +49 2323 202-2445  
Fax +49 2323 202-2401  
Mobile +49 171 9265523  
reimund.zysk@steag.com

[www.steag-technischerservice.com](http://www.steag-technischerservice.com)

#### STEAG Technischer Service GmbH

Detlef Assmann  
Pressure components and cladding  
Gummersbach Office  
Klosterstraße 1 - 3  
D-51645 Gummersbach  
Phone +49 2261 50191-65  
Fax +49 2261 50191-69  
Mobile +49 173 6163880  
detlef.assmann@steag.com

#### STEAG Technischer Service GmbH

Jürgen Knapp  
Valve inspection  
Regional Sales South  
Quierschied Service Center  
Holzer Strasse  
D-66287 Quierschied  
Phone +49 681-94 94 7339  
Mobile +49 151 22700861  
juergen.knapp@steag.com